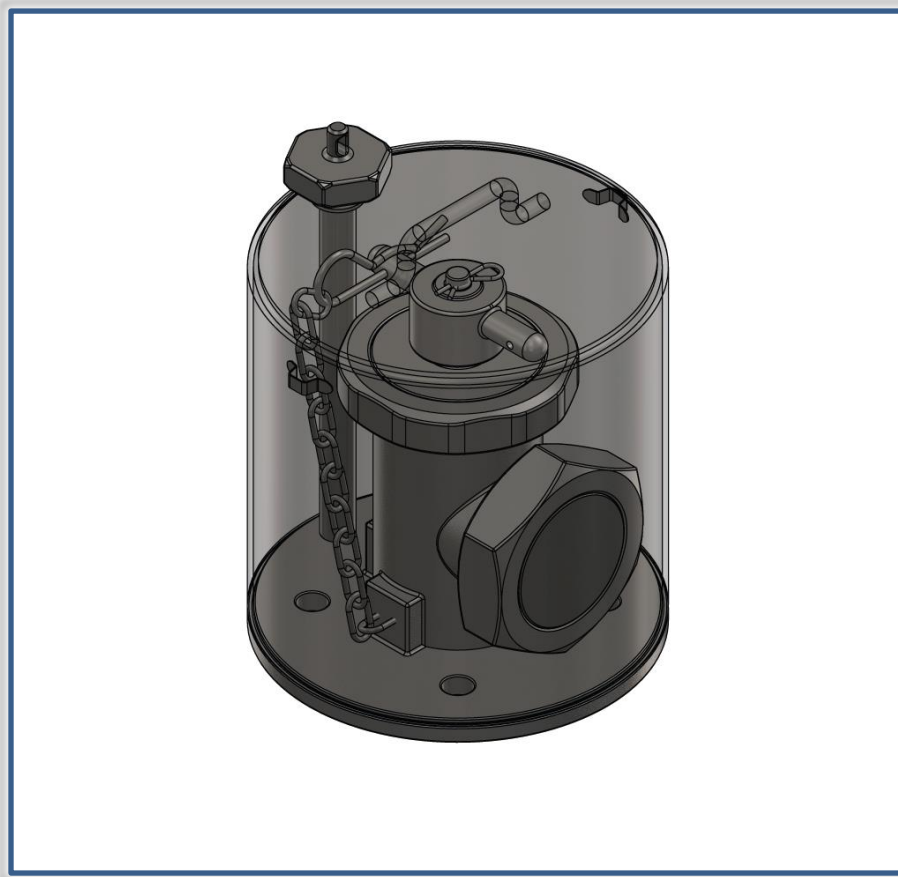




# 60TTF Sanitary / Food Grade Valve Owner's Manual

## GH61000

---



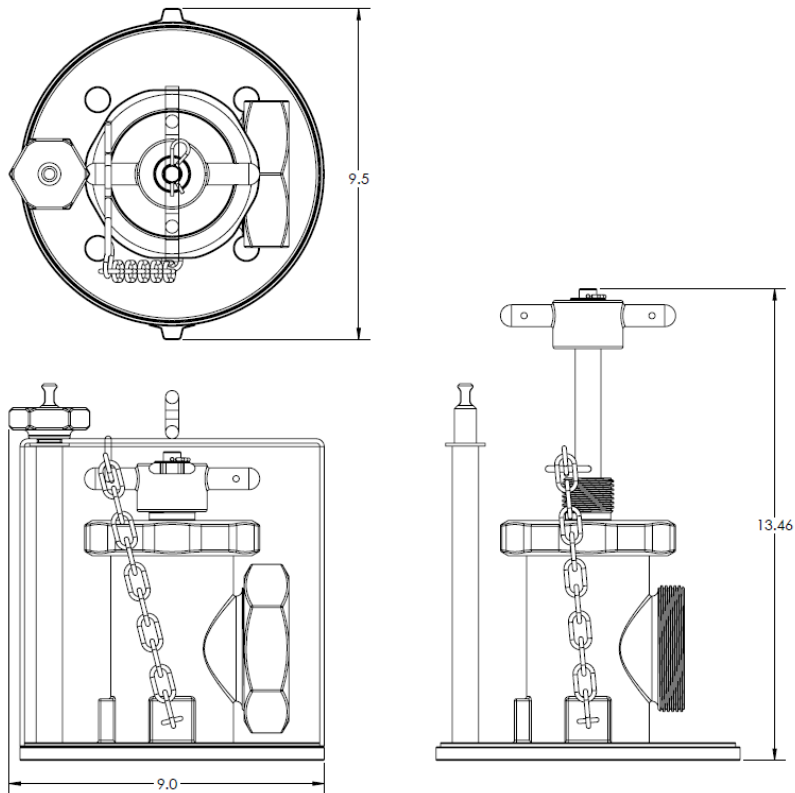
Manually operated, rising-stem compression valve, conforming to food grade and sanitary regulations, designed for use with unloading dairy product.

# Table of Contents

Technical Data .....	3
Exploded View of Product .....	4
Safety .....	5
General Safety Information .....	5
Product Storage .....	5
Product Handling .....	5
Disposal Requirements .....	5
Installation Instructions.....	6
Operation Instructions .....	6
Maintenance Instructions .....	9
Troubleshooting & Repair Guide .....	13
Replacement Parts .....	13
Warranty .....	13

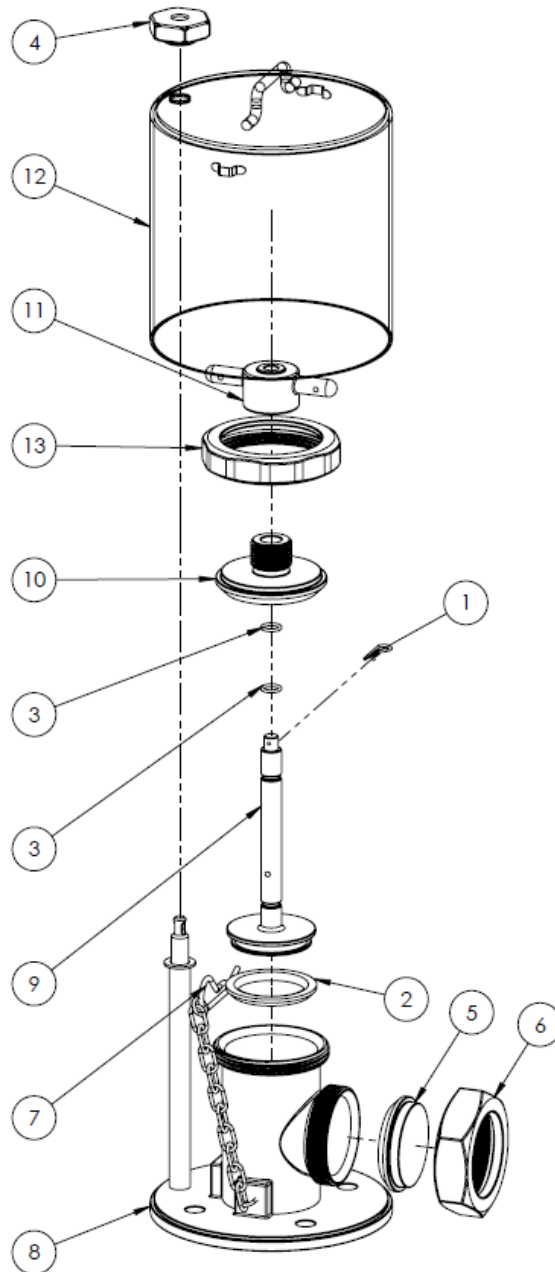
## Technical Data

1. Length (closed): 9.0", Length (open): 13.5", Width: 9.5"
2. Weight: 32.8 lbs.
3. All components made from 304 stainless steel
4. Mounts to tank using TTMA bolt pattern
5. Approximate chamber capacity: 45.8 in<sup>3</sup>
6. Plunger stroke displacement: 4.7"



## Exploded View of Product

ITEM NO.	PART NUMBER	DESCRIPTION	QTY.
1	GH60920	COTTER PIN	1
2	GH60930	MAIN SEAL	1
3	GH60940	EPDM O-RING -113	2
4	GH60950	SECURITY NUT	1
5	GH60960	OUTLET COVER	1
6	GH60970	OUTLET NUT	1
7	GH60980	COTTER PIN (LARGE)	1
8	GH61100	BODY	1
9	GH61200	POPPET	1
10	GH61300	BONNET	1
11	GH61400	HANDLE	1
12	GH61800	DUST COVER	1
13	GH61910	TOP NUT	1



# Safety

## General Safety Information



**WARNING:** All safety regulations must be followed during the operation of this product. Follow maintenance instructions as set forth in this manual to avoid serious injury. Do not attempt to disassemble the device unless you have been properly trained by a Girard Equipment representative. It is strongly recommended that this entire manual be read prior to the operation of this equipment.

## Product Storage

- Temperature Range: -40° F to 250° F
- Humidity Range: N/A
- Altitude Range: N/A

Device should be stored in its original container to maintain a dust-free environment.

## Product Handling

Do not carry or hold valve by the body post. During operation, keep fingers away from outlet port.

## Disposal Requirements

No special requirements.

## Installation Instructions

1. Ensure mounting location will allow the handle to clear all objects when in the open position, and will allow sufficient room for the valve operator.
2. Insert clean gasket.
3. Align the valve with the mounting flange at the rear of the tank.
4. Install valve using stainless steel nuts and bolts. In a cross-pattern order, torque bolts to 40 ft-lbs.

## Operation Instructions

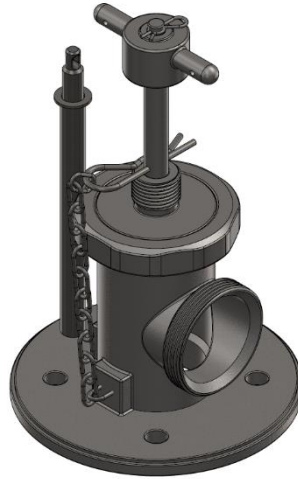
**Loading precautions:** Before loading the tank, ensure the sanitary valve is securely closed and the cap is installed.

1. Remove dust cover and outlet cap.

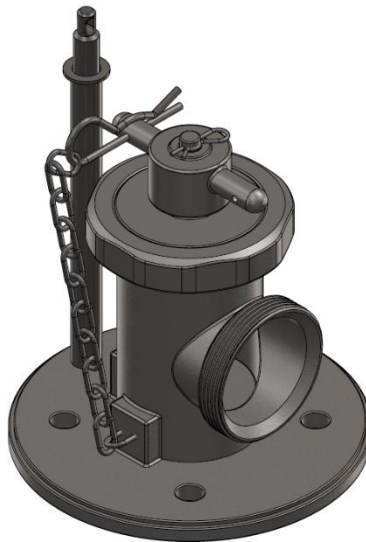


2. Connect discharge hose to outlet.

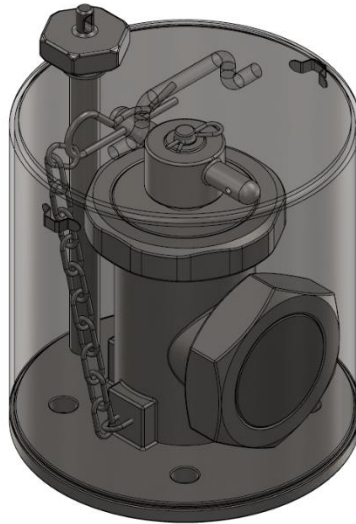
3. To unload product, remove the chained cotter pin from the hole in the handle, turn handle counterclockwise until it clears the threads, then pull the handle out to the open position. **Important:** Insert the chained cotter pin into the small hole in the shaft to lock the valve open. This is to prevent the valve from forcefully closing if the tank draws a vacuum. Keep fingers away from the inside of the outlet port.



4. When finished unloading, remove the chained cotter pin from shaft. Push the handle back to the closed position and turn clockwise to thread back onto the body and seal the valve. Return the chained cotter pin to one of the holes in the handle.



5. Reinstall outlet cap, dust cover, and security nut. **Important:** Ensure a seal tab is inserted through the hole at the top of the post, above the security nut. This is to prevent a loosened security nut from falling off due to vibrations during transport.





# Maintenance Instructions



**WARNING:** Do not attempt to disassemble this device unless you have been properly trained by a Girard Equipment representative. Follow all installation, maintenance, and repair instructions to avoid injury.

## Gasket and Seal Maintenance

All soft goods should be replaced at time of regular maintenance and requalification.

### Preparation

Before performing maintenance on any part of the valve, loosen the cap to relieve built up pressure in the outlet, then open the valve to relieve tension on the assembly.

### To replace soft goods

1. Unscrew handle (GH61400) just enough to clear the threads.



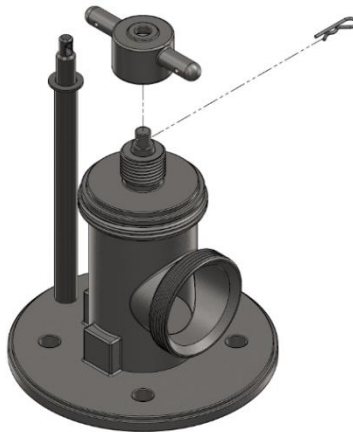
2. Unscrew top nut (GH61910), tilt at an angle to clear the handle prongs, and remove.



3. Screw handle back onto the threads until bottoming out.



4. Remove cotter pin (GH60920) above the handle, then unscrew and remove the handle.



5. Remove bonnet (GH61300).



6. Remove poppet (GH61200).



7. Finally, remove O-rings (GH60940) and main seal (GH60930) and replace.



8. Reassemble by following steps 1-7 in reverse order.

## **Cleaning Instructions**

The 60TTF Food Grade Sanitary Valve and all its appurtenances shall be cleaned and sanitized in accordance with applicable requirements of Section 7, Item 12; - Cleaning and Sanitizing of Containers and Equipment, of the Pasteurized Milk Ordinance. Food grade compression-type valves are to be removed from the tanker mounting site for manual/COP cleaning.

The product contact surfaces of the 60TTF Food Grade Sanitary Valve shall be effectively cleaned and shall be sanitized before each use.

When the time elapsed after cleaning and sanitizing, and before its first use, exceeds ninety-six (96) hours the tank must be re-sanitized.

## Troubleshooting & Repair Guide

### If device does not seal properly:

1. Wipe sealing area with clean rag.
2. Further tighten the handle.
3. Install a new main seal.
4. If problem cannot be corrected, contact a Girard Equipment representative.

## Replacement Parts

### Replacement parts for GH61000:

Seals:	GH60930	MAIN SEAL
O-rings:	GH60940	EPDM O-RING -113
Cotter pins:	GH60920	COTTER PIN
	GH60980	COTTER PIN (LARGE)

For additional materials and options, contact Girard Equipment's Engineering Department.

## Warranty

All goods manufactured by Girard Equipment, Inc. from "genuine" Girard parts are warranted to be free from defects and will be replaced free of charge if failure occurs within 5 years of date of shipment, provided that these parts have been used in accordance with seller's recommendations. Our liability in any case shall be limited to the sale price of the product and will not extend to any consequential damage.

## Contact Information

**GIRARD**  
EQUIPMENT, INC.

3455 Airport West Drive  
Vero Beach, FL 32960  
(800) 526-4330

[www.GirardEquip.com](http://www.GirardEquip.com)

